

Department 108 – POULTRY

Superintendent: Tom McMahon

| Sunday | Monday | Tuesday | Wednesday | Thursday | Friday | Saturday |
|--|---|---------|----------------------------|----------|--|----------|
| | | | | | | 1 |
| 2 | 3 | 4 | 5 Entries due by 5pm | 6 | 7 | 8 |
| 9 | 10 | 11 | 12 | 13 | 14 | 15 |
| 16 | 17 | 18 | 19 | 20 | 21 5pm-8pm: Penning of ALL Poultry | 22 |
| 23 8am: FFA Poultry Show 11am: 4-H Poultry Show 1pm: Open Class Poultry Show | 24 6pm: Release of Open class, 4-H/FFA Poultry | 25 | 26 | 27 | 28 | 29 |
| 30 | 31 | | | | | |

- **Entries will close July 5 at 5pm** Entries may be made after that day by paying double the normal fees. Under no circumstances will entries be received after Noon on Friday, July 21.
- **No early arrivals or releases.** Those wishing to arrive or depart on days other than those listed above must contact the ND State Fair office: 701-857-7620. Any requests for early release must be approved by the ND State Fair Board.

UPDATED HEALTH REGULATIONS:

- **Before unloading livestock,** a state veterinarian must check all livestock to insure health and well-being of all animals exhibiting at the ND State Fair.
 - * All entries are subject to inspection by the State Fair’s veterinarian and are to be free of parasites and disease.
 - * **Out-of-state Poultry** Certificate of veterinary inspection and importation permit number required. All birds must bear a leg or wing band and meet one of the following criteria: 1) Originate directly from an NPIP certified flock, 2) Test negative to S. pullorum within 90 days prior to exhibitions, or 3) have been purchased from an NPIP source and be accompanied by a Poultry Exhibition Statement of Origin form (SFN 60329). Form is available on the North Dakota Department of Agriculture’s Website <http://www.nd.gov/ndda/program/national-poultry-improvement-plan>.
- **If you are planning on exhibiting birds in ND, you have one of three choices:**
 1. Become a National Poultry Improvement Plan (NPIP) flock OR
 2. Test exhibition birds within 90 days of the exhibition OR
 3. Purchase exhibition birds from NPIP sources (flock, hatchery, or retail location selling from an NPIP approved source) AND
 - a. Complete a Poultry Exhibition Statement of Origin form (SFN 60329 (2-2013)), including required signatures. This form must accompany the birds to exhibits/shows.
 - i. Form can be found on North Dakota Department of Agriculture’s website: <http://www.nd.gov/ndda/program/national-poultry-improvement-plan> AND
 - b. Have the birds banded prior to exhibition.
 - i. Chickens, turkeys and game birds, except baby poultry, must be individually identified with a leg or wing band.
- **The entry fee is 50¢ per bird** entered, or **\$1 for trios and pens.** Entries are to be made on official ND State Fair entry forms, and must be paid in full at the entry time, payable to the North Dakota State Fair.
- When filling out entry form, remember that a “cock” or “hen” is a bird over one year. A “cockerel” or “pullet” is a bird under one year. A trio is one male and two females of the same breed and age. “Pens” are three-of-one kind listed. Birds entered as singles are not allowed to be entered as trios and vice versa. A bird may not be entered in more than one class. 4-H and FFA members may show the same bird in open class. There is no limit to the number of entries per class.
- All birds must be caged and on exhibit by 9am, Saturday, July 22. Judging will start at 1pm, Sunday, July 23.
- All entries must be made in the name of the exhibitor and must be bona fide property of the exhibitor.
- The superintendent may elect to use bands for identification and to re-classify birds at his discretion.
- The North Dakota State Fair will exercise all reasonable care of the exhibits and will not be responsible for loss by any causes.
- The awarding of premiums will be by comparison. The premium paid and the ribbon to be placed on an exhibit will be left to the discretion of the judge.
- Birds are released Monday, July 24 at 6pm. Early withdrawal may result in premium forfeiture.
- **Due to limited space in the West Lot, livestock trailers will be required to park off grounds. Tow vehicle can park in West Lot with appropriate pass and providing there is space available.** Vehicle passes must be purchased in advance of the first day of Fair, and will not be available for purchase at the gate. Please order on the entry blank. Livestock vehicles will be allowed on the grounds between 8pm and 10am. No admittance between 10am and 8pm except for unloading or loading of livestock.

Poultry Premium Schedule

| | 1 st | 2 nd | 3 rd |
|-----|-----------------|-----------------|-----------------|
| ALL | \$3.50 | \$2.50 | \$1.50 |

| | | | | | |
|------------|------------------|---------|------------|------------------|---------|
| BV | Best of Variety | Ribbon | RV | Reserve Variety | Ribbon |
| BB | Best of Breed | \$4.00 | RB | Reserve Breed | \$2.00 |
| BC | Best in Division | \$5.00 | RC | Reserve Division | \$30.00 |
| BOA | Best Overall | \$10.00 | ROA | Reserve Overall | \$5.00 |

The prize money appropriated by the state budget process has been reduced by state government for our 2017 Fair. State Fair shall be required to reduce cash prizes accordingly. The State of North Dakota provides only the prizes at State Fair, all other operation funds are derived from the Fair's income.

Cash awards will be mailed September 2017

Sunday, July 23 • 1pm Judge: Don Vitko (Tucson, AZ)

Please enter the Division letter, breed number, variety and Class number so the show can be placed in the proper order for judging.

Classes for Division A – L Chickens

- Class 1 Cock
- Class 2 Hen
- Class 3 Cockerel
- Class 4 Pullet
- Class 5 Old Trio
- Class 6 Young Trio

Large Fowl

Division A - American Large Fowl:

- 001 Jersey Giants
- 002 Plymouth Rocks
- 003 Rhode Island Reds
- 004 Wyandottes
- 005 Any Other American

Division B - Asiatic Large Fowl:

- 006 Brahmas
- 007 Cochins
- 008 Langshans

Division C - English Large Fowl:

- 009 Australorps
- 010 Cornish
- 011 Orpingtons
- 012 Sussex
- 013 Any Other English

Division D - Mediterranean Large Fowl:

- 014 Anconas
- 015 Andalusians
- 016 Leghorns dark
- 017 Minorcas
- 018 Sicilian Buttercups
- 019 Any Other Mediterranean

Division E - Continental Large Fowl:

- 020 Campines
- 021 Faverolles
- 022 Hamburgs
- 023 Polish
- 024 Any Other Continental

Division F - All Other Standard Breeds (AOSB):

- 025 Ameraucanas
- 026 Frizzles
- 027 Naked Necks
- 028 Phoenix
- 029 Sumatras
- 030 Any Other AOSB

Bantams

Division G - Modern Game Bantams:

- 031 Brown Red
- 032 Birchin
- 033 Any Other Modern Game

Division H - Old English Game Bantams:

- 034 Black
- 035 Black Breasted Red
- 036 Blue
- 037 Silver Duckwing
- 038 Wheaten
- 039 White
- 040 Any Other Old English Game

Division I - Single Comb Clean Legged

Bantams (SCCL):

- 041 Dutch
- 042 Japanese
- 043 Leghorn
- 044 Naked Neck
- 045 Orpington
- 046 Plymouth Rock
- 047 Rhode Island Red
- 048 Any Other SCCL

Division J - Rose Comb Clean Legged

Bantams (RCCL):

- 049 Belgian D'Anver
- 050 Rose comb
- 051 Sebrights
- 052 Wyandottes
- 053 Any Other RCCL

Division K - All Other Combs Clean Legged Bantams (AOCCL):

- 054 Ameraucana
- 055 Cornish
- 056 Polish
- 057 Sumatra
- 058 Any Other AOCCL

Division L - Feather Legged Bantams:

- 059 Belgian D'Uccle
- 060 Brahma
- 061 Cochin
- 062 Fizzles
- 063 Silkies
- 064 Any Other Feather Legged

Classes for Division M – P Ducks

- Class 1 Adult Drake
- Class 2 Adult Duck
- Class 3 Young Drake
- Class 4 Young Duck
- Class 5 Old Trio (1 male, 2 females)
- Class 6 Young Trio (1 male, 2 females)

Division M - Heavy Ducks:

- 065 Aylesbury
- 066 Muscovy
- 067 Pekin
- 068 Rouen
- 069 Saxony
- 070 Silver Appleyard

Division N - Medium Ducks:

- 071 Cayuga
- 072 Crested
- 073 Swedish

Division O - Light Ducks:

- 074 Campbell
- 075 Harlequin
- 076 Magpie
- 077 Runner

Division P - Bantam Ducks:

- 078 Call
- 079 East Indie
- 080 Mallard

Classes for Division O – S Geese

- Class 1 Adult Gander
- Class 2 Adult Goose
- Class 3 Young Gander
- Class 4 Young Goose
- Class 5 Old Trio
- Class 6 Young Trio

Division Q - Heavy Geese:

- 081 African
- 082 Embden
- 083 Toulouse

Division R - Medium Geese:

- 084 American
- 085 Pilgrim Sexlinked
- 086 Saddleback Pomeranian
- 087 Sebastopol

Division S - Light Geese:

- 088 Canadian Eastern
- 089 Chinese
- 090 Egyptian Colored
- 091 Tufted Roman

Classes for Division T Turkeys

- Class 1 Old Tom
- Class 2 Old Hen
- Class 3 Young Tom
- Class 4 Young Hen
- Class 5 Pen of 3 Young Toms
- Class 6 Pen of 3 Young Hens

Division T - Turkeys:

- 092 Beltsville Small White
- 093 Black
- 094 Bourbon Red
- 095 Bronze
- 096 Narrangansett
- 097 Royal Palm
- 098 Slate
- 099 White Holland

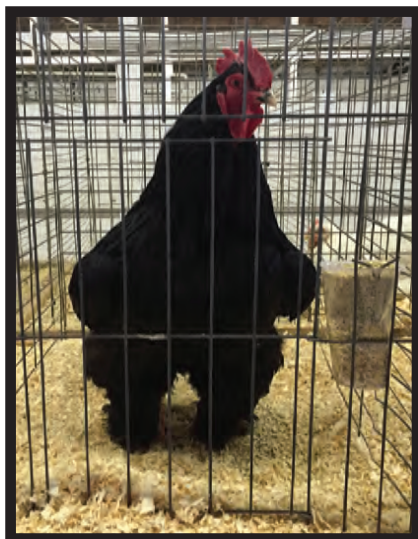
Classes for Division U Any Other Misc.

Fowl

- Class 1 Old Male
- Class 2 Old Female
- Class 3 Young Male
- Class 4 Young Female

Division U - Any Other Misc. Fowl:

- 100 Guineas
- 101 Peacocks
- 102 Pheasants
- 103 Quail
- 104 Other



Classes for Division V - CC Pigeons

- Class 1 Old Cock
- Class 2 Old Hen
- Class 3 Young Cock
- Class 4 Young Hen

Pigeons can be reclassified by variety according to the number of entries per breed so please list the color also

Division V - Fancy Pigeons:

- 105 Standard Fantail
- 106 Indian Fantail
- 107 Modena
- 108 Toy Modena
- 109 Show Roller
- 110 Show Racing Homer
- 111 American Show Racer
- 112 Chinese Owl
- 113 Jacobin
- 114 Saxon
- 115 Oriental Frill
- 116 Classic Oriental Frill
- 117 Swing Pouter
- 118 Damascene
- 119 Valencia Figurita
- 120 Any Other Fancy

Division W - Performing Breeds:

- 121 Racing Homer
- 122 Flying Roller
- 123 Parlor Roller
- 124 Parlor Tumbler
- 125 Tippler
- 126 Flight
- 127 Any Other Performing

Division CC - Utility Breeds:

- 128 American Giant Homer
- 129 Show King
- 130 Carneau
- 131 Giant Crest
- 132 Auto Sexing Texan
- 133 French Mondain
- 134 Any Other Utility



American Bantam Association

PO Box 127, Augusta, NJ 07822 • Phone: 973-271-3335
Email: bantamclub@gmail.com • Website: www.Bantamclub.com
SPECIAL MEET

RIBBONS TO CHAMPION AND RESERVE CHAMPION BANTAM.

\$1.00 Bantam Buck for Champion and Reserve for all seven Bantam Divisions (providing there are a minimum of 25 birds competing), plus a free listing in the upcoming ABA Yearbook.

Star Pin will be awarded in all classes of 100 or more, plus a listing in the upcoming yearbook in the section "Who's Who in Bantams." All wins in classes of 100 or more will be denoted with a star * and be retained in the ABA records to accumulate toward the Master Exhibitor, Master Breeder, and Lifetime Achievement awards.

Only ABA members are eligible to compete for the above awards.

Dues are \$25 per year or \$60 for three years. New members receive the latest copy of the Annual American Bantam Association Yearbook, as well as newsletters on a quarterly basis.

Starred wins are earned in classes of 100 or more in the following:

- Champions and Reserve Champions in the seven Bantam Divisions
- Best and Reserve of Breed and Variety
- Best Display when 7 or more bantam displays are shown
- Best and Reserve Display when 10 or more bantam displays are shown
- Best and Reserve Trio when 30 or more trios are shown by 4 or more exhibitors

A single bird is eligible for only one award and can earn only one starred win.

Awards are subject to change