

# Department 104 - Sheep

Superintendent: Brian Zimprich Asst. Superintendent: Kelcey Hoffmann



## RULES REGARDING SPECIE SCHEDULE & BARN:

- Barns will be locked until 3pm on Thursday, July 18. **No early arrivals or releases.**
- Livestock trailers and livestock vehicles will be required to park off grounds. Camper vehicle can park in assigned camping lot with appropriate pass. All vehicles used to transport livestock and/or RV's must have a valid auto pass. Vehicles without passes will be towed at the owner's expense. Vehicle passes must be requested in advance of the first day of Fair, and will not be available at the gate. Livestock load/unload passes will be limited to one (1) per family and can be requested on the livestock entry form. These passes will only be used to load/unload livestock and tack during entry and release times. Tack stored off grounds can only be unloaded from 6:00AM to 10:00AM and 7:00PM to 9:00PM. For more information, please see page 8
- Exhibit animals will not be muzzled while on the Fairgrounds.
- Sheep will be stalled by number of head brought. Tack or fitting pens will not be allowed unless room permits.
- **No fans, fan stands, or butt fans of any type will be allowed in the barn aisles.**
- See Page 14 for Health Regulations
- See Page 6 for General Rules & Information

## Sheep Show Schedule

Show	Show Time	Location
Decorator's Class & Ladies Leadline	Sunday - 7/21 - Noon	Main Expo Ring
Corriedale - Open Show	Sunday - 7/21 - 8:00am	Main Expo Ring
Columbia - Open Show	Following Corriedales	Main Expo Ring
Southdown - Open Show	Following Columbias	Main Expo Ring
Rambouillet - Open Show	Sunday - 7/21 - 1:00pm	Main Expo Ring
Texel - Open Show	Following Rambouillets	Main Expo Ring
Montadale - Open Show	Following Texels	Main Expo Ring
Natural Color - Open Show	Following Montadales	Main Expo Ring
Babydolls - Open Show	Following Natural Colors	Main Expo Ring
Polypay - Open Show	Following Babydolls	Main Expo Ring
AOB Meat - Open Show	Following Polypay	Main Expo Ring
AOB Wool - Open Show	Following AOB Meat	Main Expo Ring
Crossbred - Open Show	Following AOB Wool	Main Expo Ring
Dorset - Open Show	Monday - 7/22 - 8:00am	Main Expo Ring
Hampshire - Open Show	Following Dorset	Main Expo Ring
Suffolk - Open Show	Following Hampshire	Main Expo Ring
Supreme Ram & Ewe Selection - Open Show	Monday - 7/22 - 1:00pm	Main Expo Ring
Market Lambs - Open Show	Monday - 7/22 - 4:00pm	Main Expo Ring
FFA Show*	Wednesday - 7/24 - 2:00pm	Main Expo Ring
4-H Show*	Thursday - 7/25 - noon	Main Expo Ring
Jr. Point*	Friday - 7/26 - 4:00pm	Main Expo Ring

*\*These are the shows start time, breed breakdowns will be available on the show program.*

*Also, please be aware all breed shows are contingent on receiving five paid entries in the breed before entry deadline.*

## Sheep Barn Schedule

*Check Veterinarian Schedule on Page 15 before arrival*

<b>Show</b>	<b>May Begin Arrival</b>	<b>Must Be In Place/ Check-In Deadline</b>	<b>Release Time</b>
Open Sheep <b>Only</b> - Corriedale	Thursday - 7/18 - 3:00pm	Friday - 7/19 - noon	Monday - 7/22 - 2:00pm
Open Sheep <b>Only</b> - Columbia	Thursday - 7/18 - 3:00pm	Friday - 7/19 - noon	Monday - 7/22 - 2:00pm
Open Sheep <b>Only</b> - Southdown	Thursday - 7/18 - 3:00pm	Friday - 7/19 - noon	Monday - 7/22 - 2:00pm
Open Sheep <b>Only</b> - Rambouillet	Thursday - 7/18 - 3:00pm	Friday - 7/19 - noon	Monday - 7/22 - 2:00pm
Open Sheep <b>Only</b> - Texel	Thursday - 7/18 - 3:00pm	Friday - 7/19 - noon	Monday - 7/22 - 2:00pm
Open Sheep <b>Only</b> - Montadale	Thursday - 7/18 - 3:00pm	Friday - 7/19 - noon	Monday - 7/22 - 2:00pm
Open Sheep <b>Only</b> - Natural Color	Thursday - 7/18 - 3:00pm	Friday - 7/19 - noon	Monday - 7/22 - 2:00pm
Open Sheep <b>Only</b> - Babydoll	Thursday - 7/18 - 3:00pm	Friday - 7/19 - noon	Monday - 7/22 - 2:00pm
Open Sheep <b>Only</b> - Polypay	Thursday - 7/18 - 3:00pm	Friday - 7/19 - noon	Monday - 7/22 - 2:00pm
Open Sheep <b>Only</b> - AOB Meat	Thursday - 7/18 - 3:00pm	Friday - 7/19 - noon	Monday - 7/22 - 2:00pm
Open Sheep <b>Only</b> - AOB Wool	Thursday - 7/18 - 3:00pm	Friday - 7/19 - noon	Monday - 7/22 - 2:00pm
Open Sheep <b>Only</b> - Crossbred	Thursday - 7/18 - 3:00pm	Friday - 7/19 - noon	Monday - 7/22 - 2:00pm
Open Sheep <b>Only</b> - Dorset	Thursday - 7/18 - 3:00pm	Friday - 7/19 - noon	Monday - 7/22 - 2:00pm
Open Sheep <b>Only</b> - Hampshire	Thursday - 7/18 - 3:00pm	Friday - 7/19 - noon	Monday - 7/22 - 2:00pm
Open Sheep <b>Only</b> - Suffolk	Thursday - 7/18 - 3:00pm	Friday - 7/19 - noon	Monday - 7/22 - 2:00pm
Open Sheep <b>Only</b> - Market Lambs	Thursday - 7/18 - 3:00pm	Friday - 7/19 - noon (weigh in 7/22 at 10:00am)	After the Conclusion of the Show
4-H, FFA, or Jr. Point <b>Only</b> Sheep	Tuesday - 7/23 - 7:00am	Tuesday - 7/23 - 11:00am (weigh in - 7/23 at 12:30pm following Goats)	Saturday - 7/27 Time varies on distance from Minot
Jr. Point <b>Only</b> Sheep	Tuesday - 7/23 - 7:00am	Tuesday - 7/23 - 11:00am (weigh in - 7/23 at 12:30pm following Goats)	After the Conclusion of the Show
Any open Sheep showing on 7/21 and staying for 4-H, FFA, or Jr. Point	Friday - 7/19 - 7:00am	Saturday - 7/20 - 4:00pm	Can leave at 6pm on the day of their last show
Open Breeding Sheep showing on 7/22 and staying for 4-H, FFA, or Jr. Point	Friday - 7/19 - 7:00am	Sunday - 7/21 - 1:00pm	Can leave at 6pm on the day of their last show

## RULES REGARDING ENTRIES:

- **Entries will close July 6 at 5pm.** Our online entry system is the preferred method and can be found on [ndstatefair.com](http://ndstatefair.com). For a step-by-step please see page 12.
- Only entries received by the July 6 deadline will receive their passes in the mail, if any were requested. For any entry after the deadline that requested passes, the passes can be picked up at the NDSF office **prior** to the fair or at Gate F during the fair.
- Entries may be made after that day by paying triple the normal fees. **Entries will not be received after 5pm on Friday, July 12.**
- If five paid entries in one breed have not been received by check-in deadline, livestock will be required to show in the other breeds division.
- Specify special stalling needs on entry forms. Late entries have no stall guarantees.
- Base date for age is September 1. All animals must have association registration papers, presented at the time of check-in.
- Animals may be shown in only one breed. Only two entries in the individual rings and one in the groups will be accepted from any exhibitor. Any class containing over 24 head shall be split by birth date.
- Animals must be exhibited in the officially recorded owner's name. Get of Sire should be listed under one person's name, even though the animals may be owned by other individuals.

## SHEPHERD'S LEAD CLASS

**Sunday, July 21 - 12:00pm**

The objective of this class is to present the sheep and wool industry in an attractive manner, giving spectators an opportunity to view the sheep and participants in a fashionable presentation. Entrants must have a sheep background and/or an interest in sheep or wool and be at least 10 years of age. The entrants will be judged on the garment worn, which must be constructed of at least 60% wool and may be purchased or made, and also the presentation of the sheep with the contestant during the show. The garment will be judged on fit, style, attractiveness, and appropriate use of wool while adding elegance to the class. Entrants will participate in individual, personal interviews with the judges regarding general knowledge of the sheep and wool industry and garment construction. Entrants are encouraged to construct their own garments. Entrants must also furnish a blanket for their sheep to wear during this class. A total of 20 points will be available during the judging process.

Up to 10 points available on the knowledge and presentation of the sheep and up to 10 points available for the garment, its construction, fit, style, and appropriate use of wool. Out of the 10 points available for the garment, each contestant that constructs their own garment will automatically be awarded 2 points of the 10 possible points in this area.

There are three divisions for this class:

- Junior Division: ages 10 to 15
- Intermediate Division: 16 to 21 years
- Senior Division: 22 years and above

### Premiums

1st .....	\$60	2nd .....	\$50
3rd .....	\$40	4th.....	\$30
5th.....	\$20	6th.....	\$10

*All contestants will also be awarded ribbons.*

*Please contact Karla Bredahl with any questions.*

A meeting for all Lead Class participants will be held at 9:30 a.m. on the day of the show in the Expo Office. All Lead Class participants must be in attendance, dressed and ready for their interviews. The Lead Class interviews will begin promptly at 10 a.m. in the Expo Office, which will be followed by the Lead Decorator Class at Noon on Sunday, July 21.

## DECORATOR'S CLASS

**Sunday, July 21 - 12:00pm**

The Decorator Class is a special class open to children through the age of 9 years. These children will lead a sheep decorated in any manner and need not wear a wool costume. The Decorator Class gives children the chance to be imaginative and promote the Sheep Industry. Adult assistance is permissible in the Decorator Class. Characters of all kinds are seen in this class.

The Decorator Class will follow the Lead Class.

The Decorator Class will be divided into two divisions: individuals and groups of two or more. Entrants may be in one division, but not both. A \$10.00 premium will be awarded to each individual that participates in the Decorator Class.

### Rules regarding the sheep used in these special classes:

- The Sheep used in either the Lead Class or Decorator Class must be registered and/or shown in the Open Class Sheep Show, 4-H, or FFA Shows.
- The sheep must be conditioned, fitted, and trained to lead at halter. An entrant may be sponsored by an exhibitor at State Fair and does not need to own the animal.
- To aid the producers of the classes in making a script, please send a short resume, including your outfit description, to: North Dakota State Fair, PO Box 1796, Minot, ND 58702
- Participants in these contests need to have their scripts to the coordinators of the class by 8:30 am on Sunday, July 21, or they will not be allowed to participate.



### The Herdsman Award

Awarded to an exhibitor of sheep, is based on neatness and general appearance of the exhibit, as well as the exhibitor's cooperation and courtesy throughout the exhibition period.

### Premier Exhibitor

Awarded to an exhibitor of sheep, is based on the premium dollars won

## OPEN SHEEP SHOW - BREEDING CLASSES

**Sunday, July 21 & Monday, July 22 - 8:00am**

Entry Fee: \$3 per head

### Sliding Premium Schedule

**Individuals**

	1 <sup>st</sup>	2 <sup>nd</sup>	3 <sup>rd</sup>	4 <sup>th</sup>	5 <sup>th</sup>	6 <sup>th</sup>	7 <sup>th</sup>	8 <sup>th</sup>	9 <sup>th</sup>	10 <sup>th</sup>
9+	\$30	\$25	\$23	\$21	\$19	\$17	\$15	\$13	\$11	\$9
1-8	\$26	\$21	\$19	\$17	\$15	\$13	\$11	\$10		

**Groups**

	1 <sup>st</sup>	2 <sup>nd</sup>	3 <sup>rd</sup>	4 <sup>th</sup>	5 <sup>th</sup>	6 <sup>th</sup>	7 <sup>th</sup>	8 <sup>th</sup>	9 <sup>th</sup>	10 <sup>th</sup>
1-9	\$13	\$12	\$11	\$10	\$9	\$8	\$7	\$6	\$5	
10+	\$24	\$21	\$17	\$15	\$13	\$11	\$10	\$8	\$6	\$4

*Cash awards will be mailed September 2024*

- |                             |                              |
|-----------------------------|------------------------------|
| Division A .....Southdown   | Division I.....Natural Color |
| Division B .....Dorset      | Division J.....Polypay       |
| Division C .....Montadale   | Division K.....AOB Meat      |
| Division D .....Hampshire   | Division L.....AOB Wool      |
| Division E .....Suffolk     | Division M.....Texel         |
| Division F .....Corriedale  | Division N.....Babydoll      |
| Division G .....Rambouillet | Division O.....Crossbred     |
| Division H .....Columbia    |                              |

**CLASS**

1. Ram, one year and under two
2. Pair of yearling rams
3. Fall ram lamb (Sept. 1 thru Dec. 31, 2023)
4. Spring ram lamb (Jan 1-31, 2024)
5. Spring ram lamb (Feb. 1, 2024 and after)
6. Pair of ram lamb  
*Champion and Reserve Champion Ram ..... \$50/25*
7. Ewe, one year and under two
8. Pair of ewes, one year and under two
9. Fall ewe lamb (Sept. 1 through Dec. 31, 2023)
10. Spring ewe lamb (Jan. 1-31, 2024)
11. Spring ewe lamb (Feb. 1, 2024 and after)
12. Pair ewe lambs  
*Champion and Reserve Champion ewe..... \$50/25*
13. Exhibitors Flock, to consist of one ram, any age, two ewes, one year and under two; and two ewe lambs
14. Get of Sire, to consist of four animals, any age, both sexes, bred by an exhibitor and the get of one sire



## OPEN SHEEP SHOW - MARKET CLASSES

### DIVISION P

**Monday, July 22 - 6:00pm**

Entry Fee: \$6 per head

The classes shall be determined based upon weight at the discretion of the superintendent utilizing natural breaks or a maximum class size of 15.

**All market lambs must be slick shorn the entire body by weigh-in on Monday, July 22.**

**CLASS:** 90 lbs. minimum

15. Market wethers (non-wool breed wethers), under 1 year old  
*\$30.00 \$22.00 \$17.00 \$12.00 \$7.00 \$3.00*
16. Wether lambs (wool breeds wether class)  
Columbia, Rambouillet, and Corriedale  
*\$30.00 \$22.00 \$17.00 \$12.00 \$7.00*
17. Ewe lamb (wool and non-wool breeds)  
*\$30.00 \$22.00 \$17.00 \$12.00 \$7.00 \$3.00*
18. Pair of market lambs, under 1 year  
*\$30.00 \$22.00 \$17.00 \$12.00 \$6.00*

- Grand Champion Overall.....\$800*
- Reserve Champion Overall.....\$500*
- 3rd Overall.....\$200*
- 4th Overall.....\$125*
- 5th Overall.....\$75*

**Selection of Supreme Champion Ewe & Ram**

**Monday, July 22 -1:00pm**

Those eligible will be the Champion Ewe and Ram of each breed. A banner will be awarded to the Supreme Champion Ewe and Ram. If an exhibitor has Champion Ewe or Ram of a breed, the whole flock must remain on the Fairgrounds until after the selection of Supreme Champion Ewe and Ram drive.



# JUNIOR SHEEP SHOW - DIVISION Q

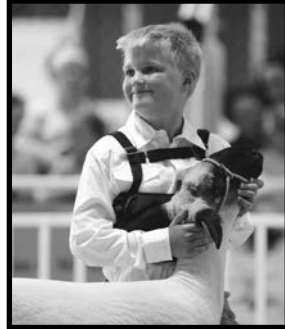
**Friday, July 26 - 4:00pm**

Entry Fee: \$6 per head

The Junior show is open to youth not older than 21 by Oct. 1, 2023. **You do not have to be a point show member to participate.**  
The class champions will compete for division champion, then division champions will compete for overall champion.

## CLASS

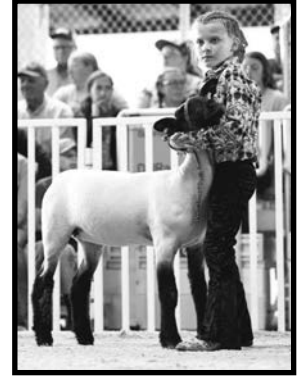
13. Yearling Ewe - Corriedale
14. Fall Ewe - Corriedale
15. Spring Ewe - Corriedale
16. Yearling Ewe - Rambouillet
17. Fall Ewe - Rambouillet
18. Spring Ewe - Rambouillet
19. Yearling Ewe - Southdown
20. Fall Ewe - Southdown
21. Spring Ewe - Southdown
22. Yearling Ewe - Dorset
23. Fall Ewe - Dorset
24. Spring Ewe - Dorset
25. Yearling Ewe - Montadale
26. Fall Ewe - Montadale
27. Spring Ewe - Montadale
28. Yearling Ewe - Hampshire
29. Fall Ewe - Hampshire
30. Spring Ewe - Hampshire
31. Yearling Ewe - Suffolk
32. Fall Ewe - Suffolk
33. Spring Ewe - Suffolk
34. Yearling Ewe - Columbia
35. Fall Ewe - Columbia
36. Spring Ewe - Columbia
37. Yearling Ewe - Natural Color
38. Fall Ewe - Natural Color
39. Spring Ewe - Natural Color
40. Yearling Ewe - Polypay
41. Fall Ewe - Polypay



42. Spring Ewe - Polypay
43. Yearling Ewe - AOB Meat
44. Fall Ewe - AOB Meat
45. Spring Ewe - AOB Meat
46. Yearling Ewe - AOB Wool
47. Fall Ewe - AOB Wool
48. Spring Ewe - AOB Wool
49. Yearling Ewe - Texel
50. Fall Ewe - Texel
51. Spring Ewe - Texel
52. Yearling Ewe - Babydoll
53. Fall Ewe - Babydoll
54. Spring Ewe - Babydoll
55. Yearling Ewe - Commercial\*
56. Fall Ewe - Commercial\*
57. Spring Ewe - Commercial\*
58. Yearling Ewe - Wether Dam\*\*
59. Fall Ewe - Wether Dam\*\*
60. Spring Ewe - Wether Dam\*\*
61. Market Ewe Lamb
62. Market Wether Lamb

\*Fitted - Non-Papered

\*\* Slick Shorn - Non-Papered



## THE NORTH DAKOTA LAMB AND WOOL PRODUCERS ASSOCIATION

will award...

**\$150 to the Champion Overall Breeding Ewe  
AND**

**\$100 to the Reserve Champion Overall Breeding  
Ewe in the ND Junior Sheep Show**

Visit [www.ndsheep.org](http://www.ndsheep.org) for information on  
becoming a member or email [NDLWPA@gmail.com](mailto:NDLWPA@gmail.com)  
for membership form

## *Journey with Dakota Wool*

**Sunday, July 21, 2024**

**Expo Barn**

**11:00am - Wool Show**

The Wool Show promotes wool production and encourages the continuous improvement of wool quality in the United States.

### **Eligibility:**

1. Entry fee is \$2 per fleece - payable when fleece is delivered to the Expo Barn by 10am Sunday, July 21, 2024
2. Fleeces are to be in a clear plastic Bag
3. Fleece must be shorn in 2023 or 2024
4. Fleece may only represent one year growth (12 months)
5. Exhibitors may enter multiple fleeces per class
6. Fleeces are to be picked up by the exhibitor by 5pm Sunday, July 21, 2024

### **Classes:**

- |                |                    |
|----------------|--------------------|
| 1. Corriedale  | 5. AOB Fine Wool   |
| 2. Columbia    | 6. AOB Medium Wool |
| 3. Rambouillet | 7. AOB Course Wool |
| 4. Targhee     |                    |

**Prizes Sponsored by:  
North Dakota Lamb & Wool  
Producers Association**

For more information contact:

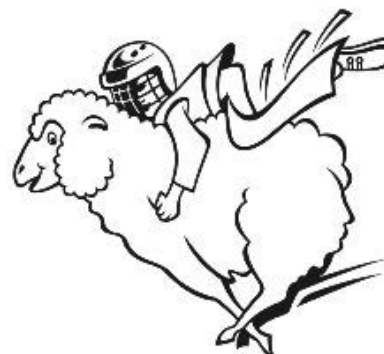
**Joana Friesz  
(701) 400-8744  
frieszlivestock@gmail.com**

# **MUTTON BUSTIN'**

**MUTTON BUSTIN' WILL BE THE  
OPENING ACT TO THE RANCH RODEO**

**JULY 24<sup>TH</sup> & 25<sup>TH</sup>**

**STARTING AT 6:30PM  
IN THE ALL SEASONS ARENA**



**BRAVE KIDS AGES 4-6 ARE INVITED  
TO TRY THEIR HAND AT RIDING SHEEP**

**PRE-REGISTRATION IS REQUIRED  
BEFORE JUNE 30, 2024**

**REGISTRATION FORMS WILL BE  
AVAILABLE AT  
WWW.NDSTATEFAIR.COM**