

# Department 101 - Beef

Superintendents: Josh (701)720-1252 & Peyton Sundsbak (701)500-7579

<i>Beef Show Schedule</i>		
<u>Show</u>	<u>Show Time</u>	<u>Location</u>
Gelbvieh - Open Show	Sunday - 7/19 - 8:00am	Arena I
Shorthorn - Open Show	Sunday - 7/19 - 8:30am	Arena I
Chiangus - Open Show	Sunday - 7/19 - 9:00am	Arena I
Charolais - Open Show	Sunday - 7/19 - 9:30am	Arena I
Hereford - Open Show	Sunday - 7/19 - 10:00am	Arena I
Red Angus - Open Show	Sunday - 7/19 - 11:00am	Arena I
Maine-Anjou - Open Show	Sunday - 7/19 - noon	Arena I
Team Fitting Contest	Sunday - 7/19 - 5:30pm	Gooseneck Arena
All Other Breeds - Open Show	Monday - 7/20 - 8:00am	Arena I
Sim-Influence - Open Show	Monday - 7/20 - 9:00am	Arena I
Limousin - Open Show	Monday - 7/20 - 10:00am	Arena I
Simmental - Open Show	Monday - 7/20 - 10:30am	Arena I
Angus - Open Show	Monday - 7/20 - noon	Arena I
Open Supreme Heifer & Bull Selection	Monday - 7/20 - 1:30pm	Arena I
Market Animals - Open Show	Monday - 7/20 - 3:00pm	Arena I
Junior Show*	Wednesday - 7/22 - 8:00am	Arena I
4-H/FFA Show*	Thursday - 7/23 - 8:00am	Arena I
Shorthorn - Breed Association Show	Tuesday - 7/21 - 8:30am	Gooseneck Arena
Limousin - Breed Association Show	Tuesday - 7/21 - 9:00am	Gooseneck Arena
Charolais - Breed Association Show	Tuesday - 7/21 - 9:30am	Gooseneck Arena
Angus - Breed Association Show	Tuesday - 7/21 - 10:00am	Gooseneck Arena
Red Angus - Breed Association Show	Tuesday - 7/21 - 11:30am	Gooseneck Arena
Simmental - Breed Association Show	Tuesday - 7/21 - 1:00pm	Gooseneck Arena
ND Club Calf - Breed Association Show	Tuesday - 7/21 - 3:30pm	Gooseneck Arena

*\*These are the shows start time, breed breakdowns will be available on the show program.*

## **RULES REGARDING SPECIE SCHEDULE & BARN:**

- Barns will be locked until 3 p.m. on Thursday, July 16. No early arrivals or releases. Tie out is at 6:30 p.m. Under no circumstances will pens be allowed in tie-outs.
- Livestock trailers and livestock vehicles will be required to park off grounds. Camper vehicle can park in assigned camping lot with appropriate pass. All vehicles used to transport livestock and/or RV's must have a valid auto pass. Vehicles without passes will be towed at the owner's expense. Vehicle passes must be requested in advance of the first day of Fair, and will not be available at the gate. Livestock load/unload passes will be limited to one (1) per family and can be requested on the livestock entry form. These passes will only be used to load/unload livestock and tack during entry and release times. Tack stored off grounds can only be unloaded from 6:00AM to 10:00AM and 7:00PM to 9:00PM. For more information please see page 8.
- All beef will be stalled on wood chips. No straw will be allowed in the Beef or Expo Barn.
- Superintendents will stall cattle after vet checks.
- **No fans, fan stands, or butt fans of any type will be allowed in the barn aisles.**
- See Page 14 for Health Regulations
- See Page 6 for General Rules & Information

# ***Beef Barn Schedule***

***Check Veterinarian Schedule on Page 15 before arrival***

<u><b>Show</b></u>	<u><b>May Begin Arrival</b></u>	<u><b>Must Be In Place/ Check-In Deadline</b></u>	<u><b>Release Time</b></u>
Open Cattle <b><u>Only</u></b> - Gelbvieh	Thursday - 7/16 - 3:00pm	Friday - 7/17 - noon	Monday - 7/20 - 6:00pm
Open Cattle <b><u>Only</u></b> - Shorthorn	Thursday - 7/16 - 3:00pm	Friday - 7/17 - noon	Monday - 7/20 - 6:00pm
Open Cattle <b><u>Only</u></b> - Chiangus	Thursday - 7/16 - 3:00pm	Friday - 7/17 - noon	Monday - 7/20 - 6:00pm
Open Cattle <b><u>Only</u></b> - Charolais	Thursday - 7/16 - 3:00pm	Friday - 7/17 - noon	Monday - 7/20 - 6:00pm
Open Cattle <b><u>Only</u></b> - Hereford	Thursday - 7/16 - 3:00pm	Friday - 7/17 - noon	Monday - 7/20 - 6:00pm
Open Cattle <b><u>Only</u></b> - Red Angus	Thursday - 7/16 - 3:00pm	Friday - 7/17 - noon	Monday - 7/20 - 6:00pm
Open Cattle <b><u>Only</u></b> - Maine-Anjou	Thursday - 7/16 - 3:00pm	Friday - 7/17 - noon	Monday - 7/20 - 6:00pm
Open Cattle <b><u>Only</u></b> - Market Animals	Thursday - 7/16 - 3:00pm	Friday - 7/17 - noon (weigh on 7/19 at 2:00pm)	Monday - 7/20 - 6:00pm
Open Cattle <b><u>Only</u></b> - All Other Breeds	Thursday - 7/16 - 3:00pm	Friday - 7/17 - noon	Monday - 7/20 - 6:00pm
Open Cattle <b><u>Only</u></b> - Sim-Influence	Thursday - 7/16 - 3:00pm	Friday - 7/17 - noon	Monday - 7/20 - 6:00pm
Open Cattle <b><u>Only</u></b> - Limousin	Thursday - 7/16 - 3:00pm	Friday - 7/17 - noon	Monday - 7/20 - 6:00pm
Open Cattle <b><u>Only</u></b> - Simmental	Thursday - 7/16 - 3:00pm	Friday - 7/17 - noon	Monday - 7/20 - 6:00pm
Open Cattle <b><u>Only</u></b> - Angus	Thursday - 7/16 - 3:00pm	Friday - 7/17 - noon	Monday - 7/20 - 6:00pm
4-H, FFA, or Jr. Point <b><u>Only</u></b> Cattle	Tuesday - 7/21 - 7:00am	Tuesday - 7/21 - 11:00am (weigh in - 7/21 at 12:30pm following Goats & Sheep)	Saturday - 7/25 - 3-6pm Time varies on distance from Minot
Junior Show <b><u>Only</u></b> Cattle	Tuesday - 7/21 - 7:00am	Tuesday - 7/21 - 11:00am (weigh in - 7/21 at 12:30pm following Goats & Sheep)	6pm - day of show
Any open cattle showing on 7/19 and staying for 4-H, FFA, or Junior Show	Friday - 7/17 - 8:00am	Saturday - 7/18 - 4:00pm	Can leave at 6pm on the day of their last show
Any open cattle showing on 7/20 and staying for 4-H, FFA, or Junior Show	Friday - 7/17 - 8:00am	Sunday - 7/19 - 1:00pm	Can leave at 6pm on the day of their last show

## **RULES REGARDING ENTRIES:**

- **Entries will close July 6 at 5pm.** Our online entry system can be found on [ndstatefair.com](http://ndstatefair.com). For a step-by-step please see page 12
- Only entries received by the July 6 deadline will receive their passes in the mail, if any were requested. For any entry after the deadline that requested passes, the passes can be picked up at the NDSF office **prior** to fair or at Gate F during the fair.
- Entries may be made after the deadline by paying triple the normal fees.
- **Entries will not be received after 5pm on Friday, July 10.**
- If five paid entries in one breed have not been received by check-in deadline, livestock will be required to show in the other breeds division.
- Specify special stalling needs on entry forms. Late entries have no stall guarantees.
- No exhibitor may enter more than two entries in any one class number. Animals may be shown in only one breed. If the number of animals in any class exceeds 15 the class will be split. Calves may be shown in only one class. All animals shown in the group and herd classes must have been entered and shown in one of the classes for single animals.
- Animals must be exhibited in the officially recorded owner's name. Get of Sire should be listed under one individual, even though the animals may be owned by other individuals
- All cattle must have a USDA 840 **official** ear tag, written tags will not be permitted.

### **The Herdsman Award**

Awarded to an exhibitor of beef cattle, is based on neatness and general appearance of the exhibit, as well as the exhibitor's cooperation and courtesy throughout the exhibition period.

### **TEAM FITTING CONTEST**

**Sunday, July 19 - 5:30PM - Gooseneck Arena**

Sign up due at 3:30pm in the Expo Office.

Top 3 teams will be announced.

1. 3 Team Members. 1 team member **MUST** be a junior member (13 & under as of October 1, 2025).
2. Following fitting of the animal, a showmanship contest will be held.
3. The junior member **MUST** be the showman for the showmanship contest.
4. Age Limit: 21 as of October 1, 2025.
5. Thirty (30) minutes will be allowed to fit and groom the animal.
6. Cattle will be clean and dry with no adhesive, oil, or other foreign substances prior to the fitting contest.
7. Straight up bars will be used.
8. No helpers will be allowed.
9. The two seniors from the previous year Champion Fitting Team can not compete on the same team back to back (two consecutive years).
10. Dress Code: Age-appropriate clothing is required
11. Prizes for top 3 teams.
12. Chairman of contest is: Lacey Lodoen. Co. Chairman: Haley Anderson. Please contact them to enter. 701-678-4484 Lacey



### **SUPREME CHAMPION**

### **FEMALE & BULL SELECTION**

**Monday, July 20 – 1:30pm- All Seasons Arena**

Those eligible will be the Champion Female and Bull of each breed. A banner will be awarded to each winner.

If an exhibitor has Champion Female or Bull of a breed, the whole herd must remain on the Fairgrounds until after the selection of Supreme Champion Female and Bull drive.

### **Purebred Steers**

A banner will be awarded to the Champion Steer and Reserve Champion Steer in each Breed.



**THE NORTH DAKOTA SIMMENTAL ASSOCIATION**  
will award...  
**\$250 to the Champion Purebred Simmental Steer**  
**AND**  
**THE ND JR SIMMENTAL ASSOCIATION**  
will award...  
**\$150 to the Reserve Champion Purebred**  
**Simmental Steer**

## OPEN BEEF SHOW - BREEDING CLASSES

Sunday, July 19 & Monday, July 20 – 8:00am

Entry Fee: \$7 per class plus \$20 per head for bedding

### Sliding Premium Schedule

	1 <sup>st</sup>	2 <sup>nd</sup>	3 <sup>rd</sup>	4 <sup>th</sup>	5 <sup>th</sup>	6 <sup>th</sup>
1-4	\$45.00	\$31.00	\$17.00	\$10.00	\$0.00	\$0.00
5-8	\$65.00	\$50.00	\$35.00	\$25.00	\$15.00	\$10.00
9+	\$80.00	\$58.00	\$43.00	\$33.00	\$23.00	\$15.00

Cash awards will be mailed September 2026.

### Breeding Divisions and Classes:

Division A .....	Angus	Division G .....	Limousin
Division B .....	Hereford	Division H .....	Red Angus
Division C .....	Gelbvieh	Division I .....	Chiangus
Division D .....	Simmental	Division J .....	Shorthorn
Division E .....	Charolais	Division K .....	Maine-Anjou
Division F ...	Simmental Influence	Division L .....	Other Breeds*

\*Must have breed registration papers

### CLASS

- Junior heifer calves, calved between Jan. 1, 2026 and after  
*Junior Heifer Calf Champion*.....Ribbon  
*Reserve Junior Heifer Calf Champion*.....Ribbon
- Senior heifer calves, calved between Sept. 1 & Dec. 31, 2025  
*Senior Heifer Calf Champion*.....Ribbon  
*Senior Heifer Calf Reserve Champion*.....Ribbon
- Late summer yearling heifer, calved between May 1 & Aug. 31, 2025  
*Intermediate Heifer Champion*.....Ribbon  
*Reserve Intermediate Heifer Champion*.....Ribbon
- Junior yearling heifers, calved between March 1 and April 30, 2025
- Junior yearling heifers, calved between Jan. 1 and Feb. 28, 2025  
*Junior Champion Heifer*.....Ribbon  
*Reserve Junior Champion Heifer*.....Ribbon
- Senior yearling females, calved between Sept. 1 and Dec. 31, 2024  
*Senior Champion Female*.....Ribbon  
*Reserve Senior Champion Female*.....Ribbon  
*Grand Champion Female*.....1st Place Cash Premium  
*Reserve Grand Champion Female (Champion and Reserve Champions competing)*.....½ of 1st Place Cash Premium
- Cow-Calf (any female older than the above ages with a calf at side)
- Junior bull calves, calved between Jan. 1, 2026 and after  
*Junior Bull Calf Champion*.....Ribbon  
*Reserve Junior Bull Calf Champion*.....Ribbon
- Senior bull calves, calved between Sept. 1 and Dec. 31, 2025  
*Senior Bull Calf Champion*.....Ribbon  
*Reserve Senior Bull Calf Champion*.....Ribbon
- Late summer yearling bulls, calved between May 1 & Aug. 31, 2025  
*Intermediate Champion Bull*.....Ribbon  
*Reserve Intermediate Champion Bull*.....Ribbon
- Junior yearling bulls, calved between March 1 and April 30, 2025
- Junior yearling bulls, calved between Jan. 1 and Feb. 28, 2025  
*Junior Champion Bull*.....Ribbon  
*Reserve Junior Champion Bull*.....Ribbon
- Senior yearling bulls, calved Jan. 1 to Dec. 31, 2024  
*Senior Champion Bull*.....Ribbon  
*Reserve Senior Champion Bull*.....Ribbon  
*Grand Champion Bull*.....1st Place Cash Premium  
*Reserve Grand Champion Bull (Champion and Reserve Champions competing)*.....½ of 1st Place Cash Premium
- Get of Sire.....½ of 1st Place Cash Premium
- Jr. Get of Sire.....½ of 1st Place Cash Premium  
 (3 animals, one sire, both sexes competing)

## OPEN BEEF SHOW - MARKET CLASSES DIVISION M

Monday, July 20 – 3:00pm

Entry Fee: \$7 per class plus \$20 per head for bedding

- All breeds are eligible for competition.
- No age or breed designation will be used for the determination of classes.
- All market animals must be weighed Sunday, July 20 at 2pm for the open show.
- No re-weighing of animals.
- Market animals will be divided into classes by weights.

### Premiums for 1<sup>st</sup> - 6<sup>th</sup> place of Class 16 & 17:

40.00 31.00 21.00 16.00 11.00 11.00

### Premiums for 1<sup>st</sup> - 8<sup>th</sup> place of Class 18 - 29:

75.00 50.00 38.00 23.00 20.00 11.00 8.00 5.00

### CLASS

- Market Heifers
- Group of 3 from weigh lots, owned by exhibitor.
- Purebred Steers -
 

18. Angus	24. Limousin
19. Hereford	25. Red Angus
20. Gelbvieh	26. Chiangus
21. Simmental	27. Shorthorn
22. Charolais	28. Maine-Anjou
23. Simmental Influence	29. Other Breeds*

\* must be papered and each breed must have a minimum of 5 head exhibited.

- Weight classes

### Premiums for Overall:

<i>Grand Champion</i> .....	\$800
<i>Reserve Champion</i> .....	\$500
<i>3rd</i> .....	\$200
<i>4th</i> .....	\$125
<i>5th</i> .....	\$75

## JUNIOR BEEF SHOW - DIVISION N

Wednesday, July 22 – 8:00am

Entry Fee: \$11 per animal

- Open to youth not older than 21 by October 1, 2025. **Do not need to be a point show member to participate.**
- Registration papers must be presented to the beef superintendent and must be in the youth's or ranch's name.
- Arrival date for those only entering this show is Tuesday, July 21 by 11am
- Departure date: Wednesday, July 22 6pm (unless staying for 4-H or FFA beef show)
- 2025 Heifers & 2024 Fall Heifers only, no cow/calf pairs or 2026 calves.
- Entry deadline: July 5, 2026. Any Jr. Steers that were not shown in the open show will be weighed after Goats and Sheep on Tuesday, July 21 at 12:30pm.

### CLASS

- |                   |                   |                     |
|-------------------|-------------------|---------------------|
| 1. Limousin       | 6. Maine-Anjou    | 11. Simmental       |
| 2. Gelbvieh       | 7. Shorthorn      | 12. Simm-influenced |
| 3. Commercial     | 8. Shorthorn Plus | 13. Angus           |
| 4. Charolais      | 9. Hereford       | 14. Market Heifers  |
| 5. Chi-influenced | 10. Red Angus     | 15. Market Steer    |

## JUNIOR BREED ASSOCIATION SHOWS

CONTACT YOUR ASSOCIATION ADVISOR TO ENTER THESE SHOWS.

### ND JUNIOR SHORTHORN ASSOCIATION SHOW

1. Exhibitors must be a Jr. under the age of 21 as of the show date.
2. Animals must be registered in their family or ranch name.
3. Classes will be split in Purebred, Shorthorn Plus and Steer divisions.
4. Showmanship classes will follow the show with Jr. (ages 14 & under) and Sr. (ages 15-21) divisions.
5. Entry fee of \$10 per head.
6. Premiums will vary depending on entries.

*For more information or to enter contact:  
Jaci Cargo 701-516-7857 or Preston Cargo 701-721-0343*

### ND JUNIOR LIMOUSIN ASSOCIATION SHOW

**Tuesday, July 21 – 9:00am**

1. Animals shown must be owned by the member, family or ranch.
2. Member can belong to the Junior Association up to the age of 21.
3. All animals must be shown by North Dakota Junior Limousin Association members.
4. The show is a “No-glue” show.
5. Showmanship will be judged separately immediately following the show. Therefore, Junior members may participate in showmanship without showing in the open Junior Limousin show.
6. Purebred: Animals competing in this division must be orange papered and 75% Limousin or above.
7. LimFlex: Animals competing in this division must be purple papered Lim-Flex.

*For more information or to enter contact:  
Maria Effertz: 701-626-2226*

### ND CHAROLAIS JUNIOR STEER & HEIFER SHOW

**Tuesday, July 21 - 9:30am**

1. Exhibitors must be a ND Jr. Charolais Association Member in good standing of current year. Dues are \$10/year.
2. The purebred and composite heifers will be split into their respective shows. Composite heifers must be registered as 50% or higher.
3. Steers must be 50%

*For more information or to enter contact: Lacey Kreft 701-537-3119*

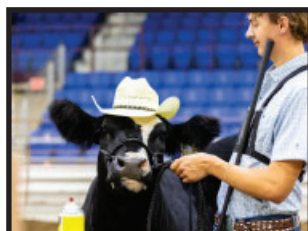
### JUNIOR ANGUS SHOW

**Tuesday, July 21 – 10:00am**

Premium provided by ND Jr. Angus Association & Sponsors. No entry fee or bedding charge for animals entered in 4-H, FFA, or Open Class. \$25 Entry Fee

\*Must be member of ND Jr. Angus Association.

*For more information or to enter contact:  
Madison Sundsbak Helms: 701-509-9157.*



### ND JUNIOR RED ANGUS ASSOCIATION STATE SHOW

**Tuesday, July 21 – 11:30 am**

1. Entry fees are \$25/animal entered.
2. Participants must attend the ND Junior Red Angus Association Meeting which will be held on Sunday at 12:00 pm on the ND State Fairgrounds prior to the ND Junior Red Angus Association State Show. Location will be announced.
3. Must be a member of the ND Junior Red Angus Association. Members may pay dues at the meeting.
4. Category 1A and 1B heifers, bulls and/or market animals must be registered in the junior member's name or family herd.
5. Commercial heifers and market animals must be sired by a Red Angus bull or be out of a Red Angus cow and be red or red baldy in color. Market classes will be divided into registered market and non-registered market animals.
6. Classes will be made after entries are received.
7. Showmanship classes will be judged separately.
8. The show is a “No glue” show.
9. Heifer grant recipients will receive \$750 credit towards the 2026 ND Red Select Sale if they win Grand or Reserve Overall Registered Female at this show.
10. Premiums and awards provided by the ND Junior Red Angus Association. Premiums are as follows: Division Grand Champions \$300; Division Reserve Champions \$200.
11. Look on the ND Red Angus Association website [www.ndredangus.org](http://www.ndredangus.org) for class descriptions and entry forms. (Please email entry forms to [heartrivergenetics@yahoo.com](mailto:heartrivergenetics@yahoo.com) by July 15)

*For more information contact:  
ND Junior Red Angus Advisors  
Annette Steffan, 701-290-9745,  
Sara Lee, 701-240-7765,  
Shaye Wanner 701-516-0077*

### ND JUNIOR SIMMENTAL ASSOCIATION SHOW

**Tuesday, July 21 - 1:00pm**

The following rules apply:

1. Exhibitor must be a ND Jr Simmental member in good standing of current year. Membership dues are \$10/year.
2. Junior members are those that are 21 years of age or younger as of January 1 of the current year.
3. There will be two shows: one for purebred simmentals and one for % simmentals (registered 50% or higher) for heifers and steers.
4. Animal must be registered in the junior member's name or family membership.
5. Classes will be made after entries are received.
6. Entry fee is \$10 per head.
7. Showmanship classes will follow the show for two age divisions— one for junior division (ages 14 & under) and one for senior division (ages 15-21).
8. Premiums will vary depending on number of classes.
9. Look on the North Dakota Junior Simmental Association Facebook page or [www.northdakotasimmental.com](http://www.northdakotasimmental.com) website for entry forms.
10. Entry forms must be submitted before July 10, 2026.

*For more information or to enter contact a Junior Advisor:  
Kim Myers: 701-308-1018 or [gkmyers@outlook.com](mailto:gkmyers@outlook.com)  
Derek & Jen Sys: 701-509-5870 or [dj.sys@hotmail.com](mailto:dj.sys@hotmail.com)*

### ND CLUB CALF ASSOCIATION

**Tuesday, July 21 – 3:30pm**

Exhibitors must have purchased steers or heifers from current club calf association members. For a list of current members contact Richard Koski at 701-400-3669 or [koski@bektel.com](mailto:koski@bektel.com). Prize money will be paid out on both steers and heifers.